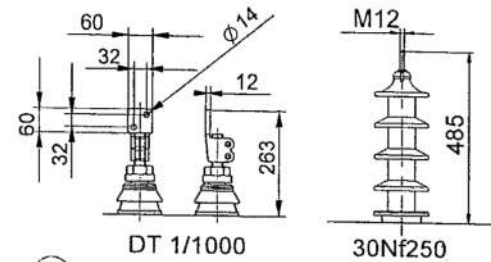
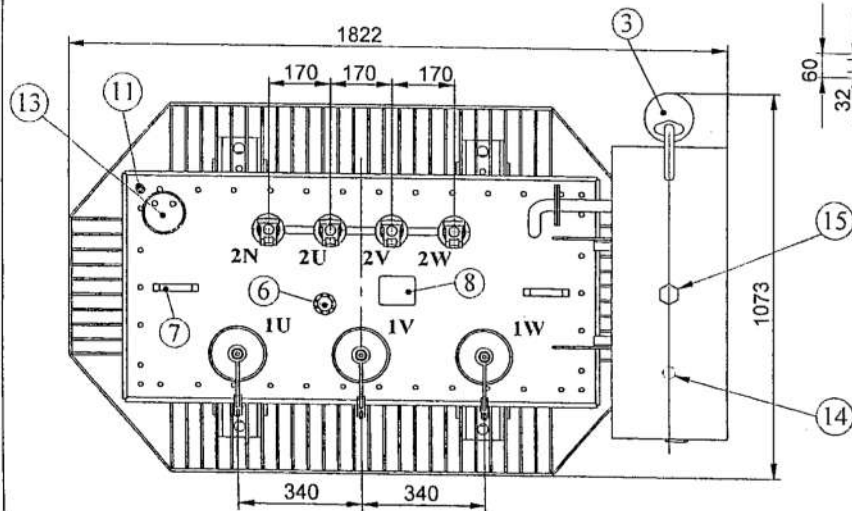


- 1) Oil Conservator
- 2) Magnetic Oil level indicator (without contact)-L=124
- 3) Dehydrating breather (G.D-603)
- 4) LV Bushing DT1/1000 (GD-333) (DIN 42530)
- 5) HV Bushing 30NF250 (G.D-334) (DIN 42531)
- 6) Off circuit tap changer
- 7) Lifting lugs for complete transformer & active part
- 8) Terminal sheet
- 9) Rating plate
- 10) Oil drain & down sampling device (DIN42551)
- 11) Earthing screw M12
- 12) Pulling lug  $\phi 30$
- 13) Oil thermometer (with alarm & trip contacts)-R1"
- 14) Drain for conservator
- 15) Filling cap for conservator
- 16) Wheels (angle for rotation  $90^\circ$ )(G.D-502)

**Weights :**

Core & Winding : 909 kg  
 Untanking : 1130 kg  
 Oil : 558 kg  
 Total : 2159 kg



Voltage ratio:  $33 \pm 2*2.5\% / 0.4 \text{ KV}$   
 Vector group: Dyn1  
 Frequency: 50 Hz  
 Cooling method: ONAN  
 Transformer color: RAL7032

Comment :	Tolerances according to:		Superficial Tolerances		Ordered by	Power
	DIN ISO 2768-C	DIN ISO 1302	DIN ISO 2768-C	DIN ISO 1302		
133/1/1909/1/19 133/1/1909/1/19	95	Date	Name		Title	Scale
	Dsgn	8.26	Bahar			
	Cntrl	9.3	Azad		Drawing no.	Page
	Appr	9.4	AR			
Index	Changes	Date	Name	Appr	Ref. no.	
					KTB1380	

