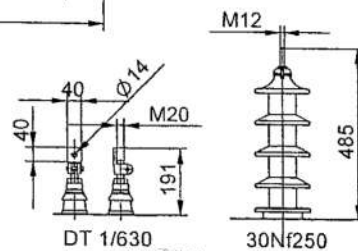
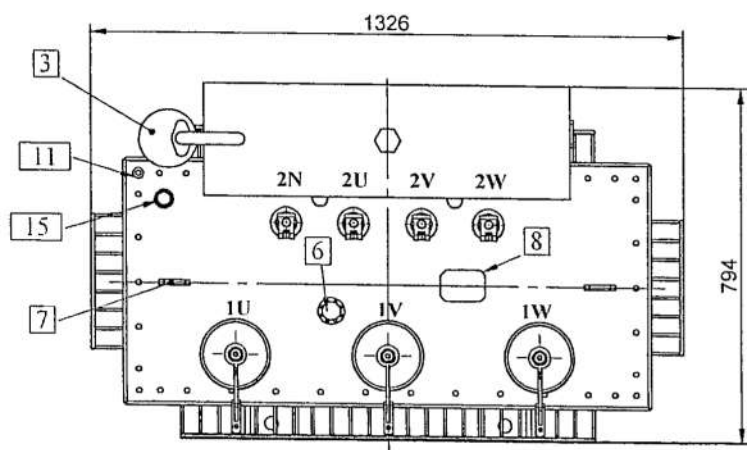


- 1) Oil Conservator
- 2) Magnetic Oil level indicator (without contact)-L=102
- 3) Dehydrating breather (G.D-603)
- 4) HV Bushing 30 NF 250 (G.D-334)(DIN42531)
- 5) LV Bushing DT1/630 (GD-333) (DIN 42530)
- 6) Off circuit tap changer
- 7) Lifting lugs for complete transformer & active part
- 8) Terminal sheet
- 9) Rating Plate
- 10) Oil drain & down sampling device (DIN42551)
- 11) Earthing screw M12
- 12) Pulling lug $\varnothing 30$
- 13) Filling cap for conservator
- 14) Drain for conservator
- 15) Oil thermometer pocket -1"

Weights :

Core & Winding: 508 kg
 Untanking : 633 kg
 Oil : 321 kg
 Total : 1130 kg



Voltage ratio: $33 \pm 2 \times 2.5 \% / 0.4 \text{ KV}$
 Vector group: Dyn1
 Frequency: 50 Hz
 Cooling mthod: ONAN
 Transformer color: RAL7032

Comment : 11099 / 1 / 19 11099 / 1 / 19	Tolerances according to:		Superficial Tolerances		Ordered by نرمال بهينه	Power 250 kVA R30
	DIN ISO 2768-C		DIN ISO 1302			
	95	Date	Name		Title Outline Drawing	Scale 1/21
	Dsgn	9.22	Relve			
	Cntrl	9.23	Yasef			
Appr	9.24	[Signature]		Drawing no. KTD018085	Page 1/1	
Kooshkan Transformers				Ref. no. KTB1376		
Index	Changes	Date	Name	Appr		