

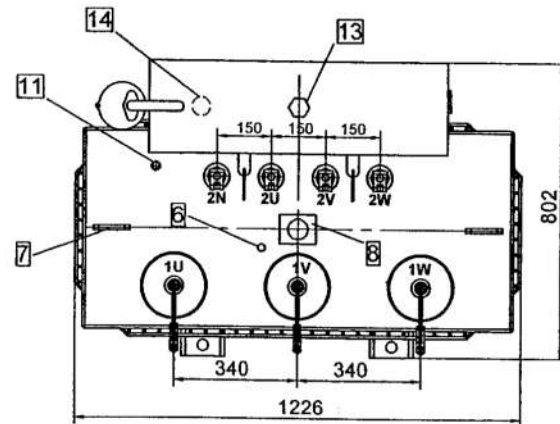
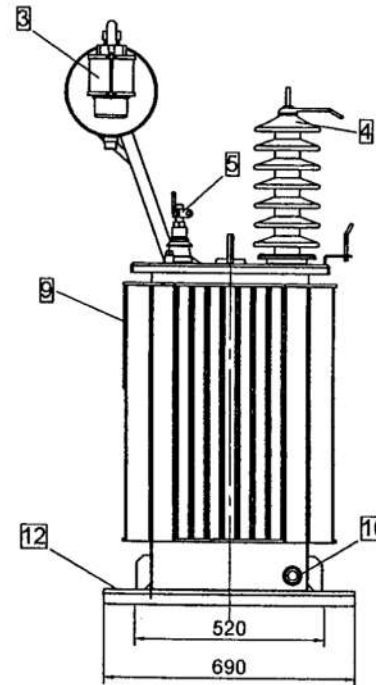
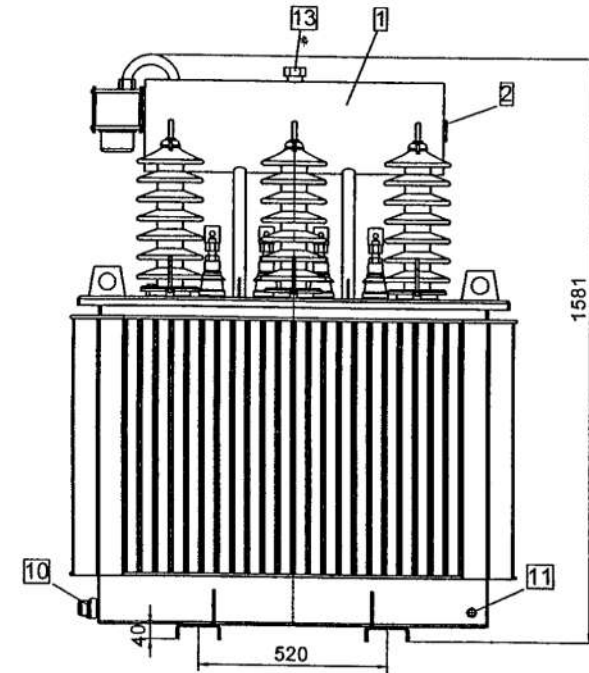


- 1) Oil Conservator
- 2) Magnetic Oil level indicator(without contact)
- 3) Dehydrating breather
- 4) HV Bushing 33/250-900
- 5) LV Bushing DT1/630 (DIN 42530)
- 6) Off circuit tap changer
- 7) Lifting lugs for complete transformer and active part
- 8) Terminal sheet
- 9) Rating plate
- 10) Oil drain and down sampling device (DIN 42551)
- 11) Earthing screw M12
- 12) Pulling lug  $\varnothing 30$
- 13) Filling cap for conservator
- 14) Drain for conservator

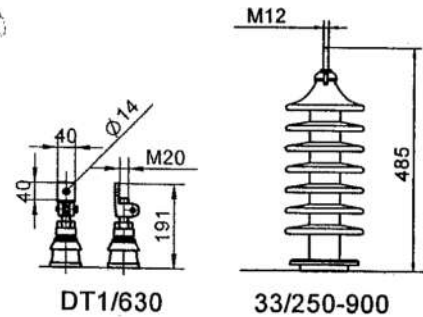
Weights

Untanking :	660 kg
Oil :	295 kg
Total :	1075 kg

Rating Power:	160 kVA
Voltage Ratio:	33/ 0.4 kV
Tender:	Low Loss-AB'



1990/19/10



Comment: Paint: RAL 7032

\* Dimensions and weights are approx.

Design: *Azed*

95.6.15

Control: *Se*

95.6.15

Approval: *Se*

95.6.15

Date : 89.04.22

Prep. No. : 1